

RSL Safeguarding

Reporting abuse and dealing with concerns

RSL understands that reporting or even identifying potential or ongoing abuse is a difficult and sometimes distressing task. However, we encourage anyone involved with the exams process to report any concerns they may have in regards to the safety, welfare or wellbeing of any candidate. If a concern is raised against any RSL staff or staff employed within a RSL exam centre then RSL will immediately liaise with the Local Authority Designated Officer (LADO).

Reporting a concern

Any concerns may involve RSL staff, centre staff or even other members of the public and all details of the concerns should be sent through to the Designated Safeguarding Lead or their Deputy as soon as possible.

If you wish to report a concern, please complete the relevant Reporting a Concern form and submit it by email or by post to:

Designated Safeguarding Lead
Matthias Postel
Harlequin House
7 High Street
Teddington
TW11 8EE
safeguarding@rslawards.com

Deputy Designated Safeguarding Lead
Caroline Ross
Harlequin House
7 High Street
Teddington
TW11 8EE
safeguarding@rslawards.com

Urgent concerns

If you are concerned enough that you feel there may be a real and present danger to a child or adult at risk then please call 999 any other urgent matters then please call the Rockschoo offices on 0345 460 4747 and ask to speak to Designated Safeguarding Lead or their Deputy.

Prepared by: Caroline Ross

Review Date: April 2020

More information

For additional information on what to do if you are concerned about a child or vulnerable adult's welfare please refer to the guidance documents below, issued by the UK government and leading charity Safe Network.

<https://www.gov.uk/government/publications/what-to-do-if-youre-worried-a-child-is-being-abused--2>

<https://www.gov.uk/government/publications/safeguarding-children-and-young-people>

http://www.safenetwork.org.uk/help_and_advice/Pages/what_is_a_lado.aspx

Dealing with a concern

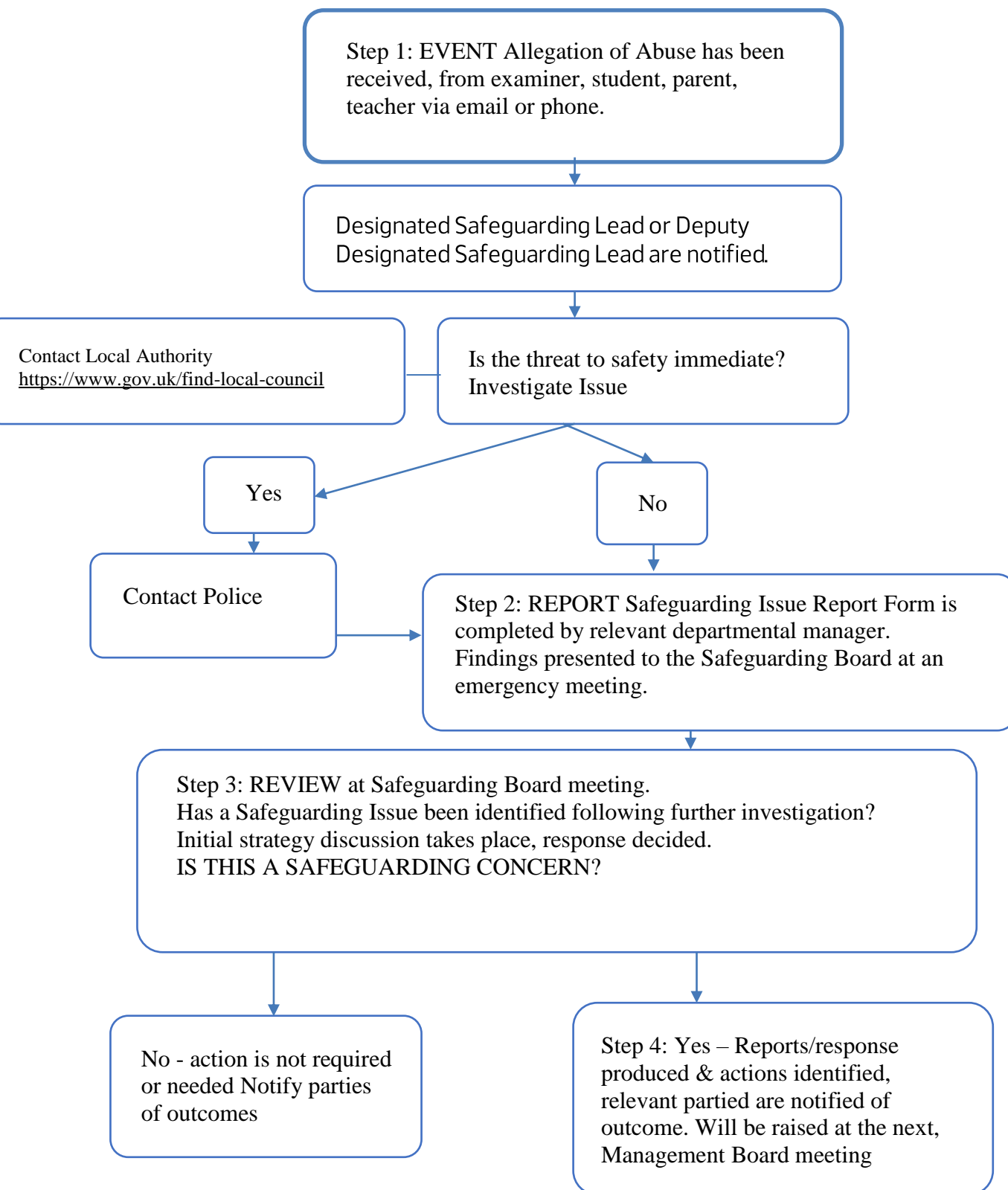
RSL will always take any concerns raised seriously, no matter how seemingly trivial, however they may not always choose to refer this on. A standard system of thresholds is used when assessing a reported concern and the appropriate people will be informed as per the need.

This is usually measured as follows, although every case is considered carefully on an individual basis and in accordance with the relevant Local Safeguarding Children Board's framework for assessment.

Prepared by: Caroline Ross

Review Date: April 2020

Flowchart of how to action an incident



Prepared by: Caroline Ross

Review Date: April 2020